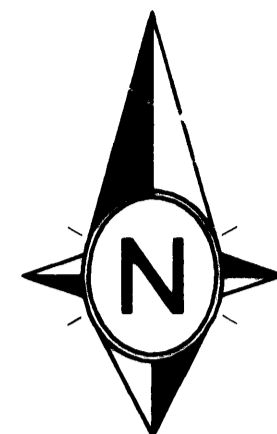


GOVERNOR'S LANDING REPLAT

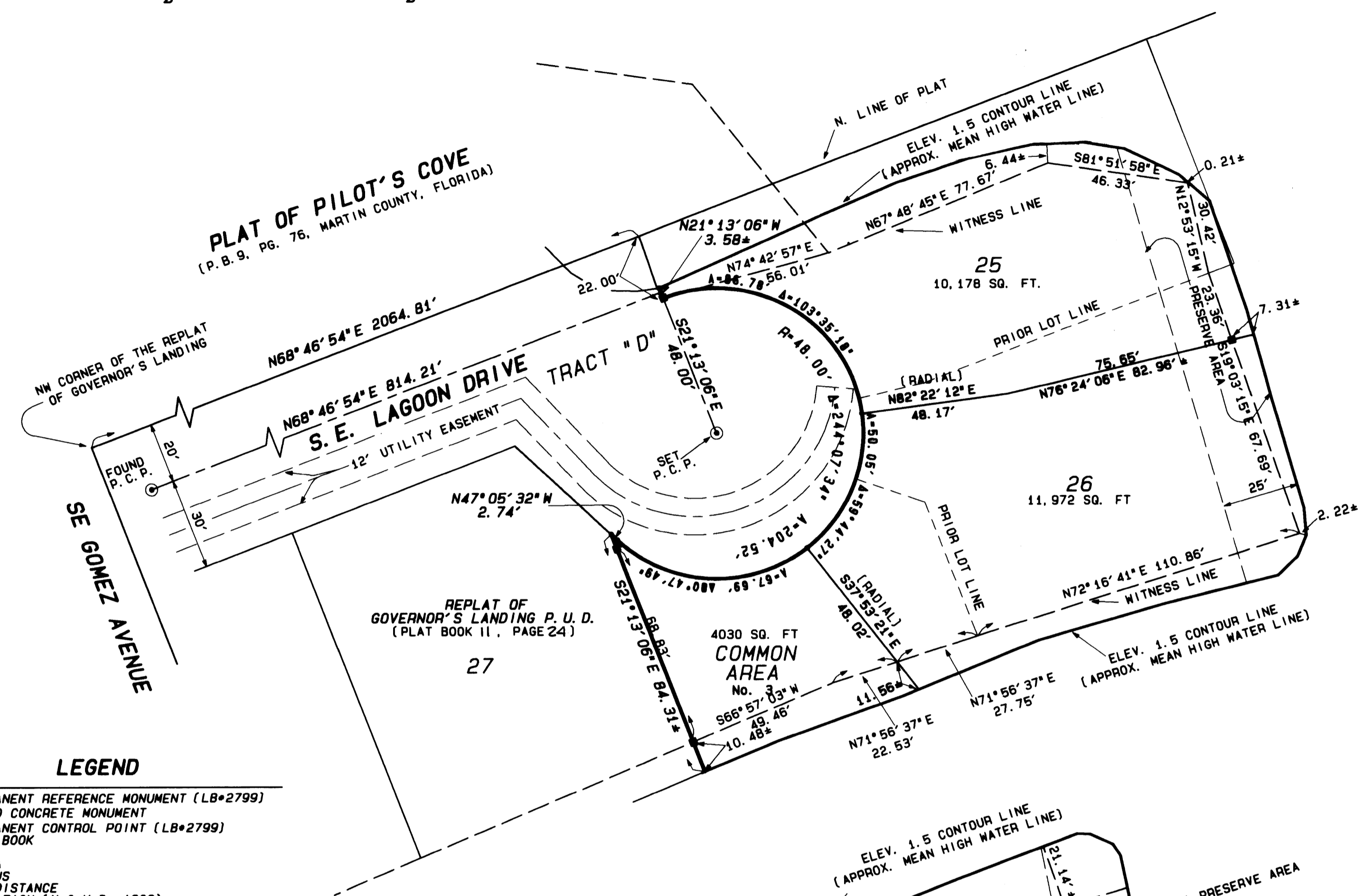
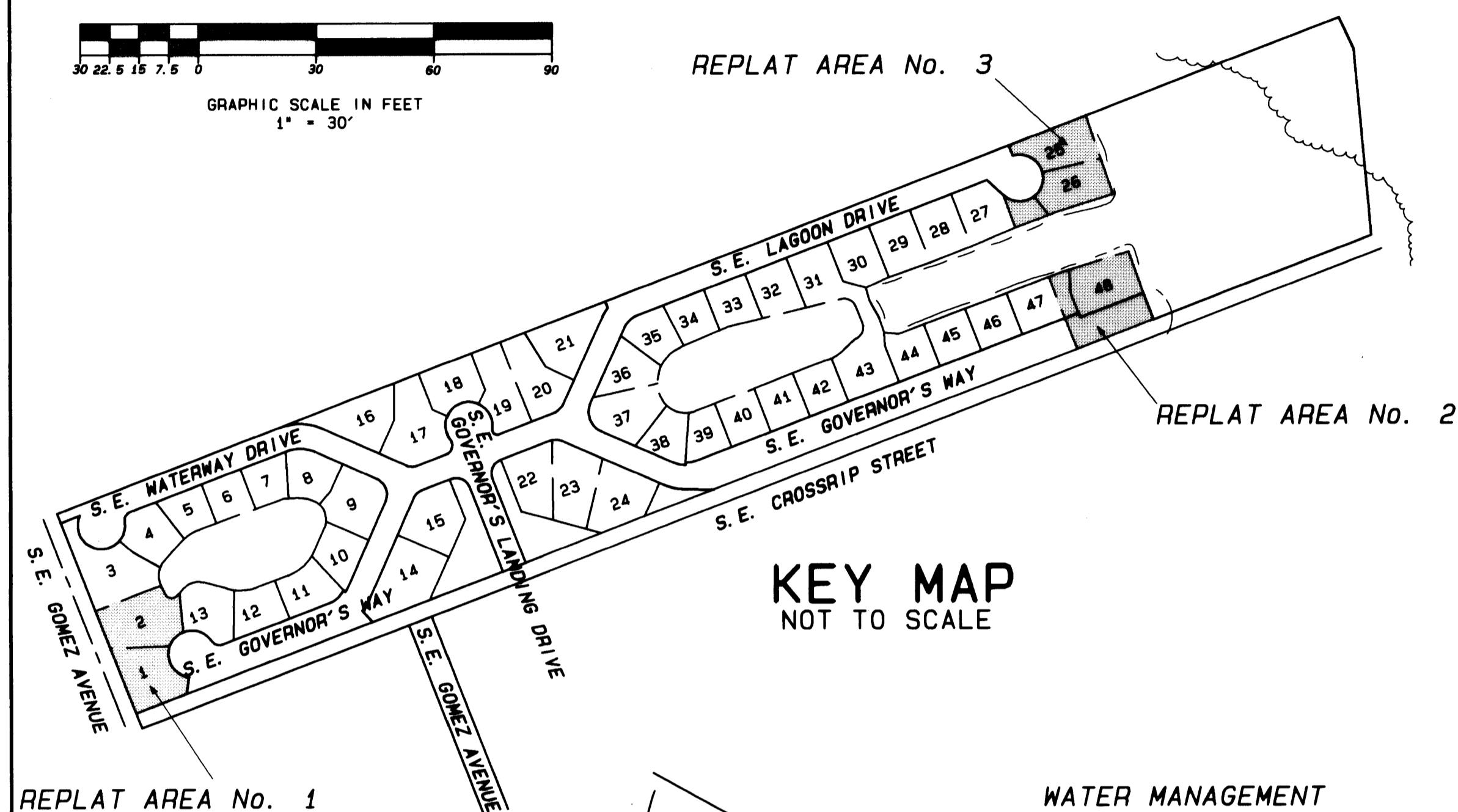
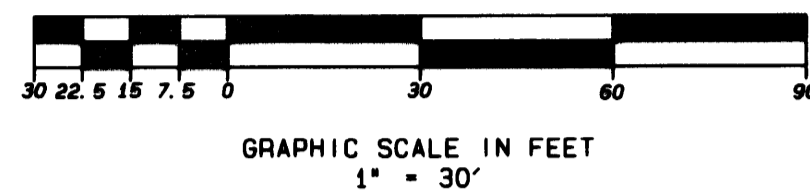
BEING A REPLAT OF PART OF THE REPLAT OF GOVERNOR'S LANDING P. U. D.,
PLAT BOOK 11, PAGE 24, MARTIN COUNTY, FLORIDA, PUBLIC RECORDS.

REPLAT AREA No. 3

Plat Book 14
page 11
Date: June 11, 1996
Marsh Staller
By: Deborah Longley
File # 1181128

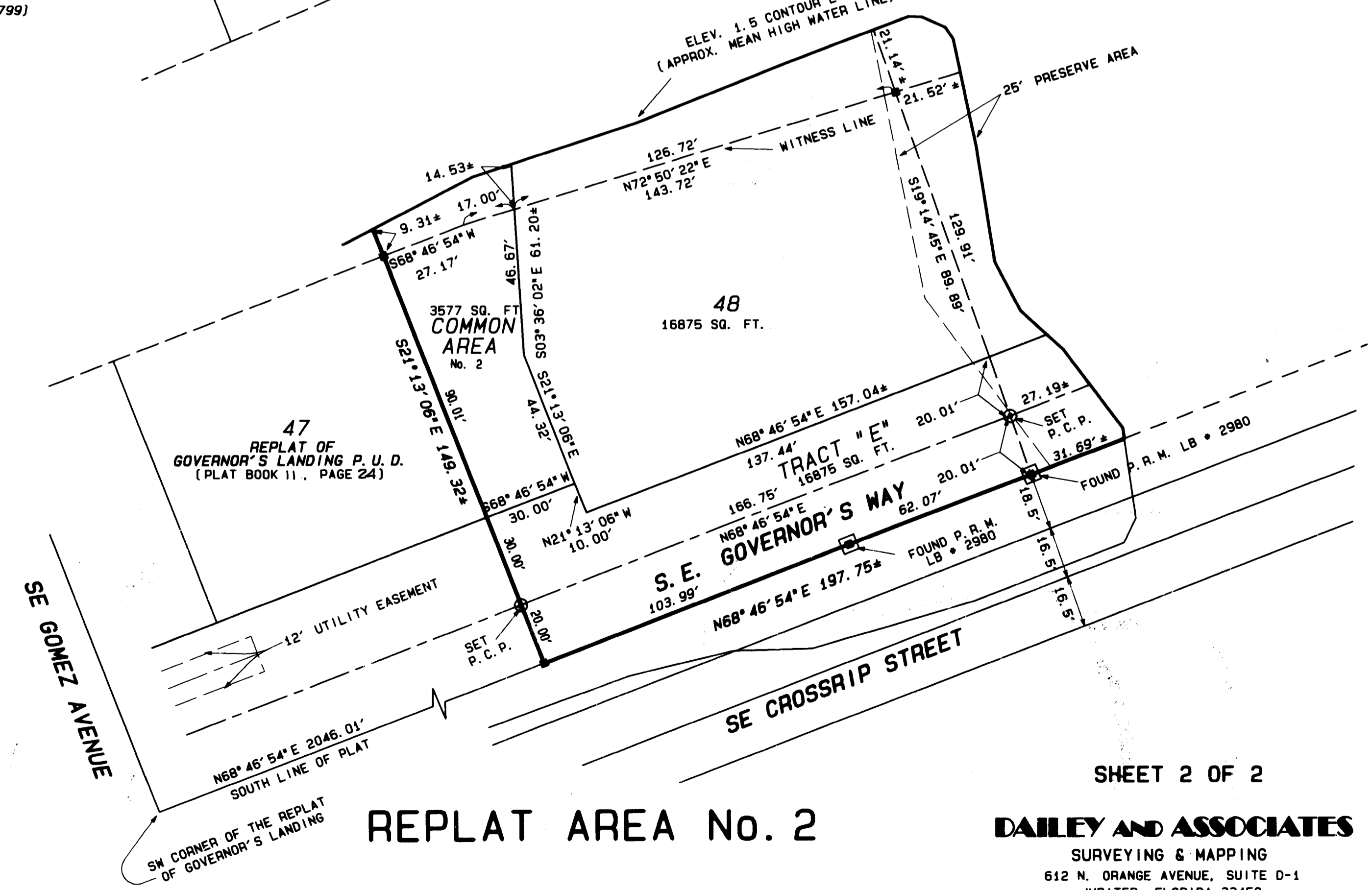
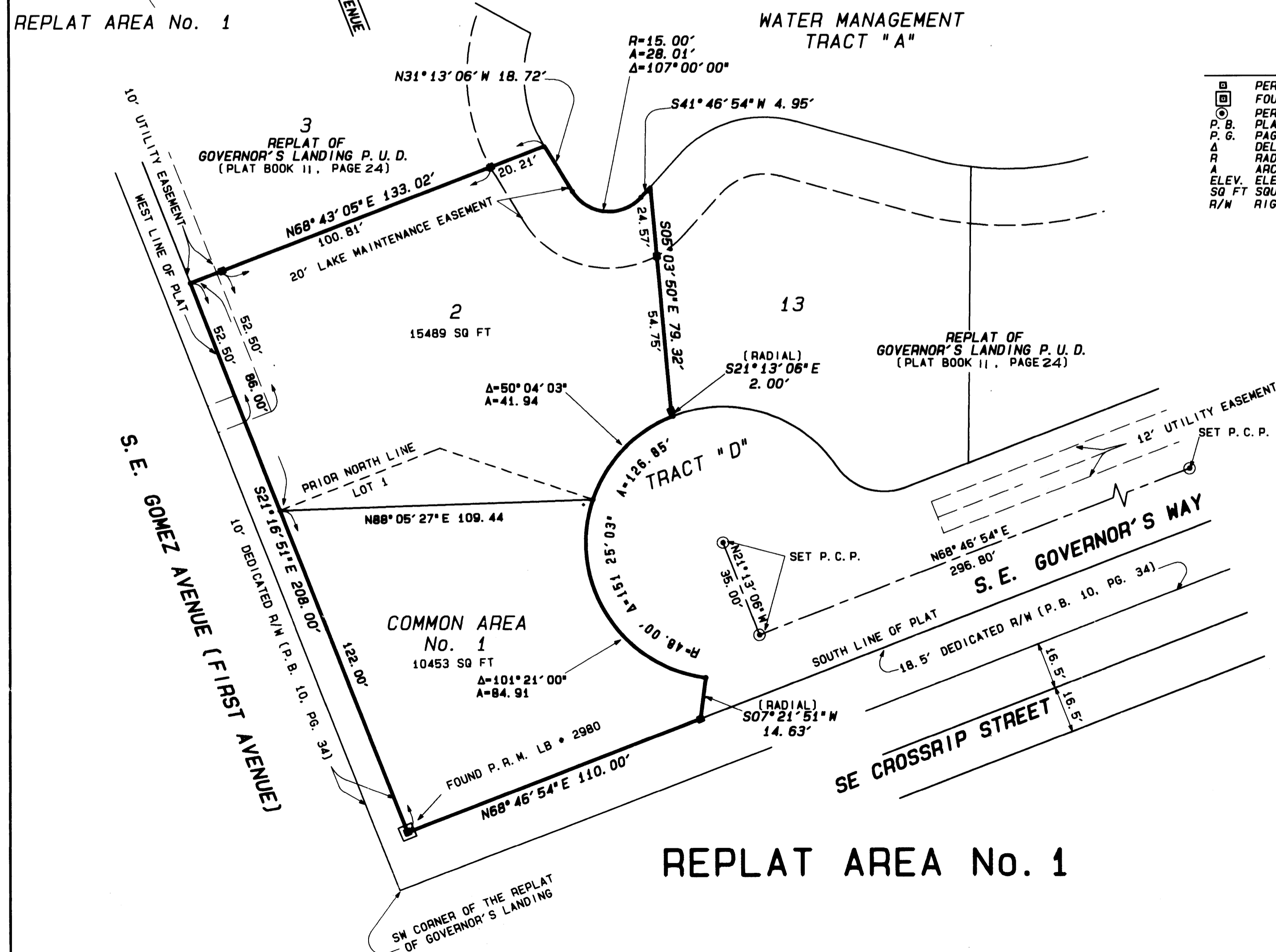


SCALE: 1" = 30'



LEGEND

- PERMANENT REFERENCE MONUMENT (LB#2799)
- FOUND CONCRETE MONUMENT
- PERMANENT CONTROL POINT (LB#2799)
- PLAT BOOK
- P. B. PAGE
- Δ DELTA
- R RADIUS
- A ARC DISTANCE
- ELEV. ELEVATION (N. G. V. D. 1929)
- SQ FT SQUARE FEET
- R/M RIGHT OF WAY



SHEET 2 OF 2

DAILEY AND ASSOCIATES
SURVEYING & MAPPING
612 N. ORANGE AVENUE, SUITE D-1
JUPITER, FLORIDA 33458
PHONE: (407) 746-8424